



AMON DECOR

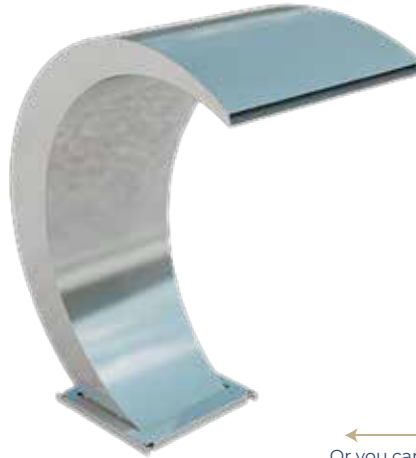
المجموعة الهندسية أمون

WATERFALLS CURTAINS

شلالاٲ وستاٲر ماٲية







Code : FC-B

[Click to specifications](#)

The product made of Stainless Steel (Esp. 304)

Water inlet 1.5 inch or inch for all sizes

Rear Inlet Code	Flow Rate (m3/hr)	Height (CM)	Width (CM)	Distance (CM)	Thickness Side (MM)	Thickness Roof (MM)	Thickness Base (MM)	Thickness Cover (MM)
FC-B-40	10	40	40	22	2	1.5	3	1.25
FC-B-50	12	50	40	27	2	1.5	3	1.25
FC-B-70	15	70	40	37	2	1.5	3	1.25
FC-B-100	20	100	40	52	2	1.5	3	1.25

Available Colors

Gold



Rose Gold







Code : FC-S

[Click to specifications](#)

The product made of Stainless Steel (Esp. 304)

Water inlet 1.5 inch or inch for all sizes

Rear Inlet Code	Flow Rate (m3/hr)	Height (CM)	Width (CM)	Distance (CM)	Thickness Side (MM)	Thickness Roof (MM)	Thickness Base (MM)	Thickness Cover (MM)
FC-S40	10	40	30	22	2	1.5	3	1.25
FC-S50	12	50	30	27	2	1.5	3	1.25
FC-S70	15	70	30	36	2	1.5	3	1.25
FC-S100	20	100	30	52	2	1.5	3	1.25

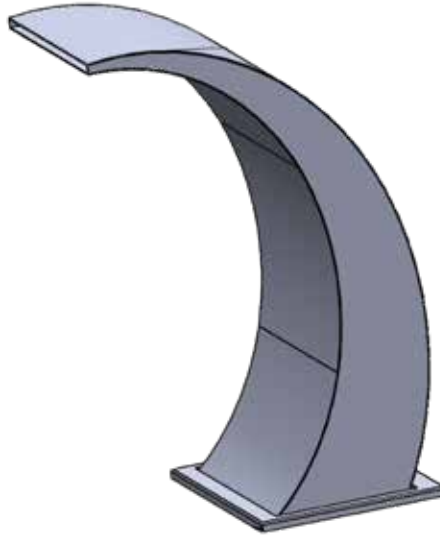
Available Colors

Gold



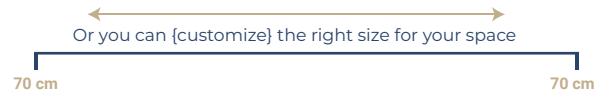
Rose Gold





Code : FC-O

[Click to specifications](#)



The product made of Stainless Steel (Esp. 304)

Water inlet 1.5 inch or inch for all sizes

Rear Inlet Code	Flow Rate (m3/hr)	Height (CM)	Width (CM)	Distance (CM)	Thickness Side (MM)	Thickness Roof (MM)	Thickness Base (MM)	Thickness Cover (MM)
FC-O70	20	70	30	36	2	1.5	3	1.25

Available Colors

Gold



Rose Gold





Code : F-Q
[Click to specifications](#)

The product made of Stainless Steel (Esp. 304)
Water inlet 1.5 inch or inch for all sizes

Rear Inlet Code	Flow Rate (m3/hr)	Height (CM)	Width (CM)	Distance (CM)	Thickness Side (MM)	Thickness Roof (MM)	Thickness Base (MM)	Thickness Cover (MM)
F-Q-50	10	50	30	27	2	1.5	3	1.25
F-Q-70	15	70	40	18	2	1.5	3	1.25
F-Q-100	20	100	40	25	2	1.5	3	1.25

Available Colors







Code : FQB

[Click to specifications](#)



The product made of Stainless Steel (Esp. 304)
Water inlet 1.5 inch or inch for all sizes

Rear Inlet Code	Flow Rate (m3/hr)	Height (CM)	Width (CM)	Distance (CM)	Thickness Side (MM)	Thickness Roof (MM)	Thickness Base (MM)	Thickness Cover (MM)
FQB-100	10	100	40	21	2	1.5	3	1.25
FQB-70	8	70	40	22	2	1.5	3	1.25

Available Colors

Gold



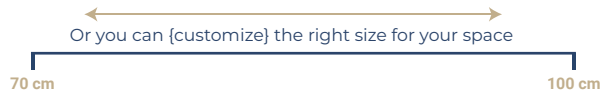
Rose Gold







Code : FJE
[Click to specifications](#)

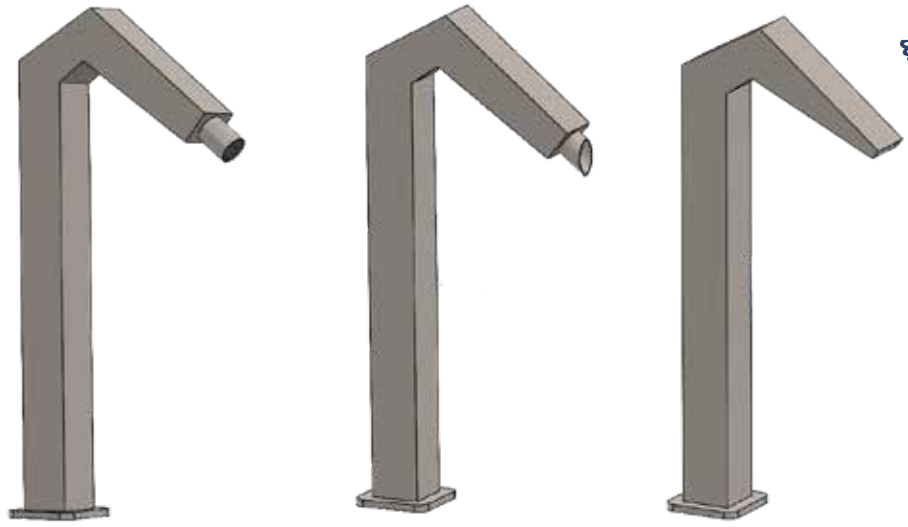


The product made of Stainless Steel (Esp. 304)
Water inlet 1.5 inch or inch for all sizes

Rear Inlet Code	Flow Rate (m3/hr)	Height (CM)	Width (CM)	Distance (CM)	Thickness Side (MM)	Thickness Roof (MM)	Thickness Base (MM)	Thickness Cover (MM)
FJE-70	16	70	40	36	2	1.5	3	1.25
FJE-100	18	100	40	55	2	1.5	3	1.25

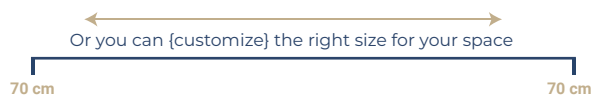
Available Colors





Code : F-JE7

[Click to specifications](#)

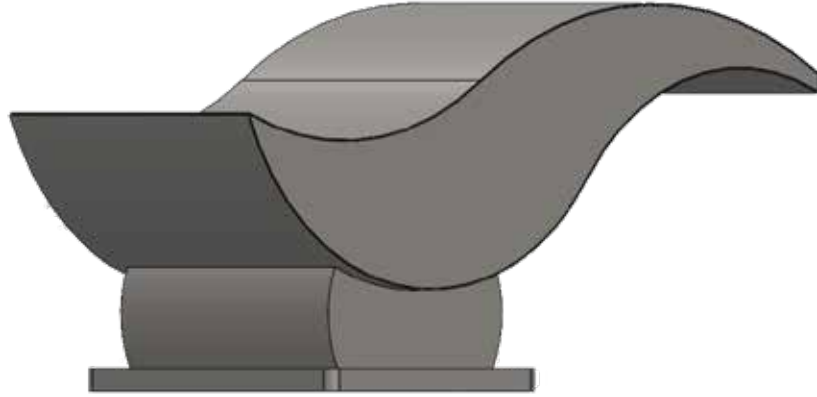


The product made of Stainless Steel (Esp. 304)

Water inlet 1.5 inch or inch for all sizes

Rear Inlet Code	Flow Rate (m3/hr)	Height (CM)	Width (CM)	Distance (CM)	Thickness Side (MM)	Thickness Roof (MM)	Thickness Base (MM)	Thickness Cover (MM)
F-JE7-1	10	70	7	7	2	1.5	3	1.25
F-JE7-2	10	70	7	7	2	1.5	3	1.25
F-JE7-3	10	70	7	7	2	1.5	3	1.25





Code : FDU

[Click to specifications](#)



The product made of Stainless Steel (Esp. 304)

Water inlet 1.5 inch or inch for all sizes

Rear Inlet Code	Flow Rate (m3/hr)	Height (CM)	Width (CM)	Distance (CM)	Thickness Side (MM)	Thickness Roof (MM)	Thickness Base (MM)	Thickness Cover (MM)
FDU-50	18	50	30	50	2	1.5	3	1.25

Available Colors

Gold



Rose Gold







Code : FG

[Click to specifications](#)

The product made of Stainless Steel (Esp. 304)

Water inlet 1.5 inch or inch for all sizes

Rear Inlet Code	Flow Rate (m3/hr)	Height (CM)	Width (CM)	Distance (CM)	Thickness Side (MM)	Thickness Roof (MM)	Thickness Base (MM)	Thickness Cover (MM)
FG-50	10	50	30	20	2	1.5	3	1.25
FG-70	15	70	30	26	2	1.5	3	1.25
FG-100	20	100	30	38	2	1.5	3	1.25

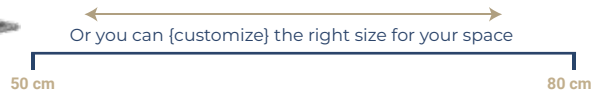
Available Colors

Gold



Rose Gold





Code : FDO
[Click to specifications](#)

The product made of Stainless Steel (Esp. 304)
Water inlet 1.5 inch or inch for all sizes

Rear Inlet Code	Flow Rate (m3/hr)	Height (CM)	Width (CM)	Distance (CM)	Thickness Side (MM)	Thickness Roof (MM)	Thickness Base (MM)	Thickness Cover (MM)
FDO-50	10	50	30	20	2	1.5	3	1.25
FDO-80	17	80	30	26	2	1.5	3	1.25

Available Colors

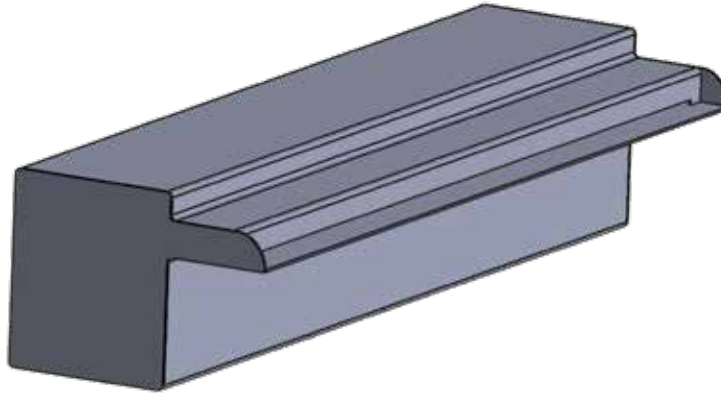
” Gold

Rose Gold

CURTAINS

ستائر مائية





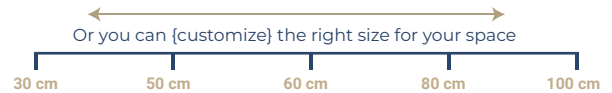
Code : RIN - 9

[Click to specifications](#)

The product made of Stainless Steel (Esp. 304)

Water inlet 1.5 inch or inch for all sizes

Rear Inlet Code	Bottom Inlet Code	Length (cm)	Flow Rate (m ³ /hr)	Thickness (MM)
RIN-30-9-R	RIN-30-9-B	30	2	1.5
RIN-50-9-R	RIN-50-9-B	50	4	1.5
RIN-60-9-R	RIN-60-9-B	60	5	1.5
RIN-80-9-R	RIN-80-9-B	80	7	1.5
RIN-100-9-R	RIN-100-9-B	100	11	1.5







Code : RIN-Q

[Click to specifications](#)

The product made of Stainless Steel (Esp. 304)

Water inlet 1.5 inch or inch for all sizes

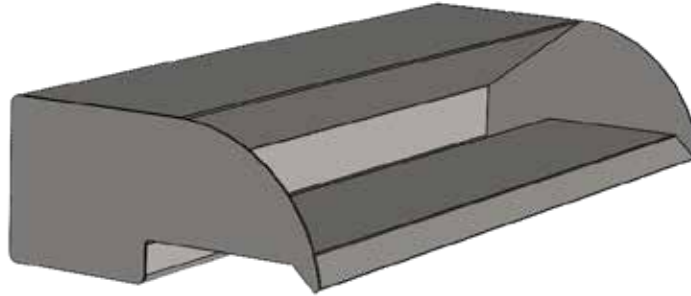
Rear Inlet Code	Bottom Inlet Code	Length (cm)	Flow Rate (m3/hr)	Thickness (MM)
RIN-Q-30-R	RIN-Q-30-B	30	2	1.5
RIN-Q-50-R	RIN-Q-50-B	50	4	1.5
RIN-Q-60-R	RIN-Q-60-B	60	5	1.5
RIN-Q-80-R	RIN-Q-80-B	80	7	1.5

Or you can {customize} the right size for your space

30 cm 50 cm 60 cm 80 cm 100 cm







Code : RIN - 6

[Click to specifications](#)

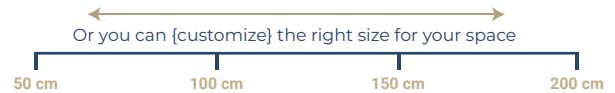
The product made of Stainless Steel (Esp. 304)

Water inlet 1.5 inch or inch for all sizes

Rear Inlet Code	Bottom Inlet Code	Length (cm)	Flow Rate (m ³ /hr)	Thickness (MM)
RIN-30-6-R	RIN-30-6-B	30	4	1.5
RIN-50-6-R	RIN-50-6-B	50	6	1.5
RIN-60-6-R	RIN-60-6-B	60	9	1.5
RIN-80-6-R	RIN-80-6-B	80	12	1.5
RIN-100-6-R	RIN-100-6-B	100	15	1.5







Code : REX-T

[Click to specifications](#)

The product made of Stainless Steel (Esp. 304)

Water inlet 1.5 inch or inch for all sizes

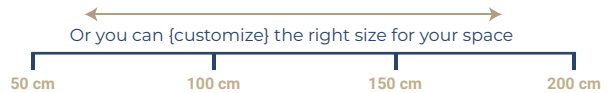
Rear Inlet Code	Length (cm)	Flow Rate (m3/hr)	Thickness (MM)	Thickness Side (MM)	Thickness Roof (MM)	Thickness Base (MM)	Thickness Cover (MM)
REX-T-50	50	3	1.5	2	1.5	3	1.25
REX-T-100	100	7	1.5	2	1.5	3	1.25
REX-T-150	150	10	1.5	2	1.5	3	1.25
REX-T-200	200	14	1.5	2	1.5	3	1.25







Code : REX-D
[Click to specifications](#)



The product made of Stainless Steel (Esp. 304)
Water inlet 1.5 inch or inch for all sizes

Rear Inlet Code	Length (cm)	Flow Rate (m3/hr)	Thickness (MM)	Thickness Side (MM)	Thickness Roof (MM)	Thickness Base (MM)	Thickness Cover (MM)
REX-D-50	50	4	1.5	2	1.5	3	1.25
REX-D-100	100	8	1.5	2	1.5	3	1.25
REX-D-150	150	13	1.5	2	1.5	3	1.25
REX-D-200	200	18	1.5	2	1.5	3	1.25







Code : REX-S

[Click to specifications](#)

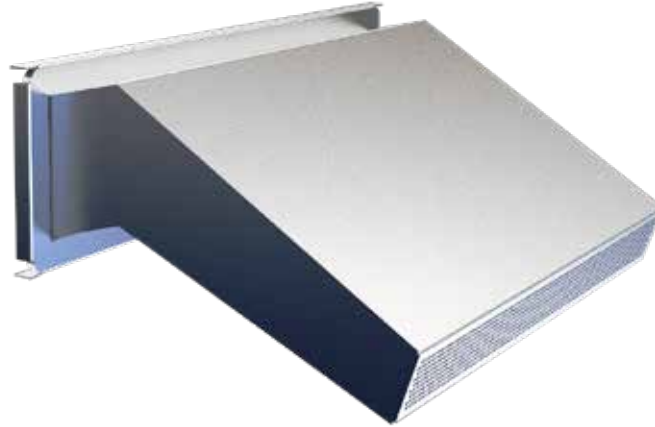


The product made of Stainless Steel (Esp. 304)

Water inlet 1.5 inch for all sizes

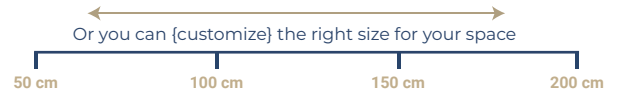
Rear Inlet Code	Length (cm)	Flow Rate (m3/hr)	Thickness (MM)	Thickness Side (MM)	Thickness Roof (MM)	Thickness Base (MM)	Thickness Cover (MM)
REX-S-50	50	6	1.5	2	1.5	3	1.25
REX-S-100	100	13	1.5	2	1.5	3	1.25
REX-S-150	150	18	1.5	2	1.5	3	1.25
REX-S-200	200	34	1.5	2	1.5	3	1.25





Code : REX-7D

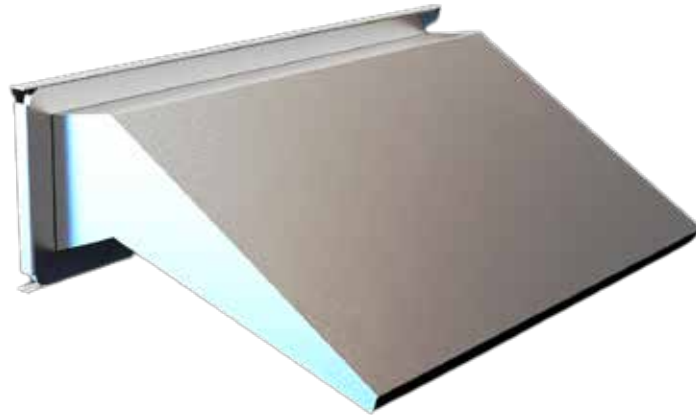
[Click to specifications](#)



The product made of Stainless Steel (Esp. 304)

Water inlet 1.5 inch or inch for all sizes

Rear Inlet Code	Length (cm)	Flow Rate (m3/hr)	Thickness (MM)	Thickness Side (MM)	Thickness Roof (MM)	Thickness Base (MM)	Thickness Cover (MM)
REX-7D-50	50	5	1.5	2	1.5	3	1.25
REX-7D-100	100	12	1.5	2	1.5	3	1.25
REX-7D-150	150	18	1.5	2	1.5	3	1.25
REX-7D-200	200	22	1.5	2	1.5	3	1.25



Code : REX- 7

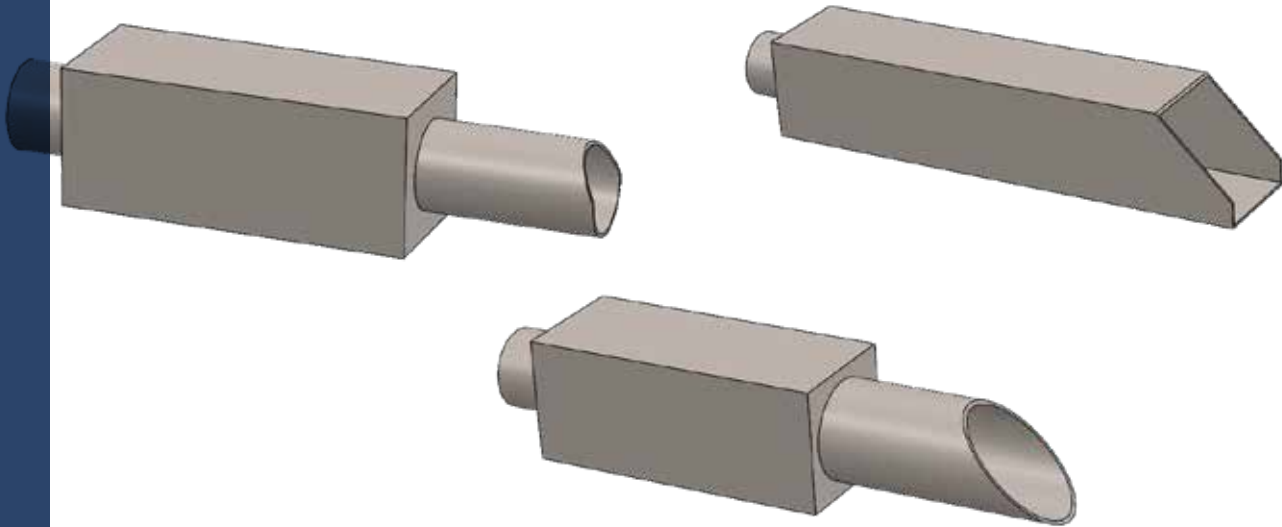
[Click to specifications](#)



The product made of Stainless Steel (Esp. 304)

Water inlet 1.5 inch or inch for all sizes

Rear Inlet Code	Length (cm)	Flow Rate (m3/hr)	Thickness (MM)	Weight KG	Thickness Side (MM)	Thickness Roof (MM)	Thickness Base (MM)	Thickness Cover (MM)
REX-7-50	50	5	1.5	8	2	1.5	3	1.25
REX-7-100	100	12	1.5	10	2	1.5	3	1.25
REX-7-150	150	18	1.5	12	2	1.5	3	1.25
REX-7-200	200	22	1.5	14	2	1.5	3	1.25



Code : REX- TUBE

[Click to specifications](#)

The product made of Stainless Steel (Esp. 304)

Water inlet 1.5 inch or inch for all sizes

Rear Inlet Code	Length (cm)	Flow Rate (m3/hr)	Thickness (MM)
REX-TUBE-1	40	4	1.5
REX-TUBE-2	30	5	1.5
REX-TUBE-3	30	5	1.5



AMON DECOR

المجموعة الهندسية أمون

WATERFALLS CURTAINS

النزل





Code : FO-DRY

[Click to specifications](#)

MODEL NO.	BODY DIAMETER (CM)	Flow (M3/H)	WATER HEIGHT	COVER DIAMETER (CM)	MATERIALS
FO-DRY3	33*33*40	0.5-1.5	50-150	20	STAINLESS STEEL 304

”



Code : NFG

[Click to specifications](#)

MODEL NO.	JOINT SIZE	PRESSURE	Flow (M3/H)	SPRAY HEIGHT (M)	COVER DIAMETER (M)	MATERIALS
NFG01	1"	60-180	3.6-60	2.7	0.3-0.8	STAINLESS STEEL 304
NFG012	1.5"	100-250	4-8	3.5	0.5-1	
NFG02	2"	250-500	5-10	10	1.2-2	



Code : NCA

[Click to specifications](#)

MODEL NO.	JOINT SIZE	PRESSURE	Flow (M3/H)	SPRAY HEIGHT (M)	COVER DIAMETER (M)	MATERIALS
NCA015	1/2"	40-200	2-4	1-4	0.2	STAINLESS STEEL 304
NCA034	3/4"	40-200	2-4	1-4	0.2	
NCA01	1"	40-200	60-10	1-4	0.3	
NCA02	2"	50-400	12-25	1-10	1	



Code : NFA

[Click to specifications](#)

MODEL NO.	JOINT SIZE	PRESSURE	Flow (M3/H)	SPRAY HEIGHT (M)	COVER DIAMETER (M)	MATERIALS
NFA034	3/4"	30-50	2-3	0.2-0.6	0.4-0.8	STAINLESS STEEL 304
NFA01	1"	30-80	4-8	0.3-0.8	0.6-1.2	
NFA015	1-1/2"	30-80	18-10	0.5-1.0	0.8-1.5	
NFA03	3"	60-120	24-26	1.0-2.3	1.5-2.5	



Code : NCO

[Click to specifications](#)

MODEL NO.	JOINT SIZE	PRESSURE	Flow (M3/H)	SPRAY HEIGHT (M)	COVER DIAMETER (M)	MATERIALS
NCO010	1/4"	50-100	0.1-0.5	1-3	-	STAINLESS STEEL 304
NCO011	1/2"	50-150	0.3-1.5	1-6	-	
NCO034	3/4"	50-150	1-3	1-8	-	
NC001	1"	50-150	2-4	3-12	-	
NCO014	1-1/2"	50-150	3-6	3-15	-	
NC002	2"	50-150	5-8	3-20	-	
NCO016	2-1/2"	50-200	6-10	4-20	-	
NC003	3"	50-250	8-12	5-30	-	
NC004	4"	50-300	10-16	6-40	-	



Code : NPH

[Click to specifications](#)

MODEL NO.	JOINT SIZE	PRESSURE	Flow (M3/H)	SPRAY HEIGHT (M)	COVER DIAMETER (M)	MATERIALS
NPH034	3/4"	50-70	2-4	2-3		STAINLESS STEEL 304
NPH01	1"	50-80	5-8	2-3		
NPH02	1-1/2"	50-15	7-10	2-3		



Code : NWH

[Click to specifications](#)

MODEL NO.	JOINT SIZE	PRESSURE	Flow (M3/H)	SPRAY HEIGHT (M)	COVER DIAMETER (M)	MATERIALS
NWH801	1"	75	3.5	3	1.0-1.5	STAINLESS STEEL 304
NWH8015	1-1/2"	100	10	4	1.5-2.5	
NWH802	2"	150	18	5	1.5-4.0	



Code : NMU

[Click to specifications](#)

MODEL NO.	JOINT SIZE	PRESSURE	Flow (M3/H)	SPRAY HEIGHT (M)	COVER DIAMETER (M)	MATERIALS
NMU012	1/2"	20-40	1	0.2	0.3	STAINLESS STEEL 304
NMU034	3/4"	30-40	1.5	0.25	0.5	
NMU01	1"	30-50	2	0.25	0.6	
NMU015	1.1/2"	50-60	3	0.3	0.7	
NMU02	2"	60-70	4	0.3	0.8	



Code : NST

[Click to specifications](#)

MODEL NO	DIMENSIONS (MM)	WATER DEMAND (L/MIN)	MATERIALS
NST18	22*22*40	0.5	STAINLESS STEEL 304 LACE

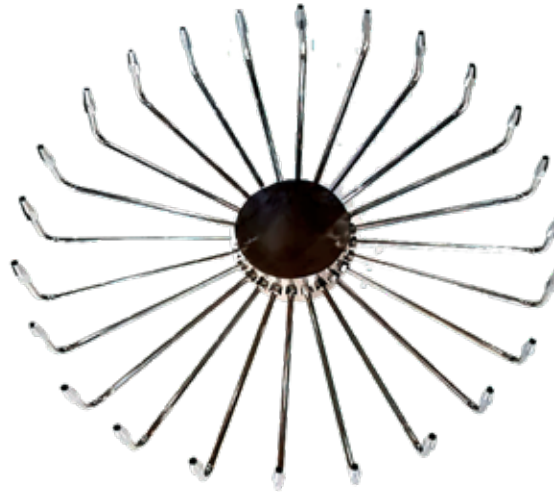




Code : NCI

[Click to specifications](#)

MODEL NO.	JOINT SIZE	PRESSURE	Flow (M3/H)	SPRAY HEIGHT (M)	COVER DIAMETER (M)	MATERIALS
NCI01	1"	100-200	13-18	3-6	0.3-0.5	STAINLESS STEEL 304
NCI02	1.1/2"	120-200	21-30	5-7	0.6-0.8	



Code : NWH2

[Click to specifications](#)

MODEL NO.	JOINT SIZE	PRESSURE	Flow (M3/H)	SPRAY HEIGHT (M)	COVER DIAMETER (M)	MATERIALS
NWH2401	1"	75	3.5	3	1.0-1.5	STAINLESS STEEL 304
NWH2402	2"	150	18	5	1.5-4.0	
NWH24015	1-1/2"	100	10	4	1.5-2.5	

WATERFALLS CURTAINS

الشاور

AMON DECOR



امون للديكور والأعمال الخشبية





Code : SHW0180

[Click to specifications](#)

The product made of Stainless Steel (Esp. 304)

Water inlet 1.5 inch or inch for all sizes

Rear Inlet Code	Length (CM)	Width (CM)	Hight (CM)	StainlessSteel (TYPE)	StainlessSteel (Thickness [MM])	Wood			
						Length (CM)	Width (CM)	Thickness (CM)	(TYPE)
SHW0180	180	150	210	304	2				
Mechanism			Filter						
Inside Electric Valve			No Filter			150	5	2	Tek Wood OR Beech Wood



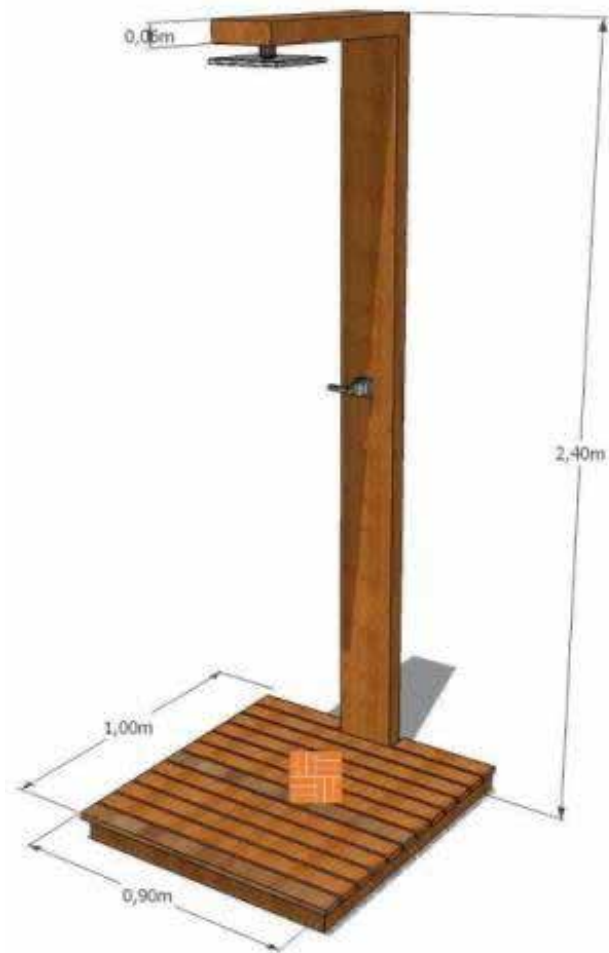
Code : SHW0150

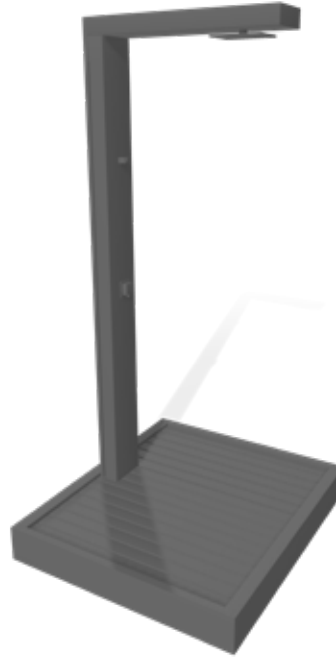
[Click to specifications](#)

The product made of Stainless Steel (Esp. 304)

Water inlet 1.5 inch or inch for all sizes

Rear Inlet Code	Length (CM)	Width (CM)	Hight (CM)	StainlessSteel (TYPE)	StainlessSteel (Thickness [MM])	Mechanism	Filter
SHW0150	180	150	210	304	2	Inside Electric Valve	No Filter





Code : SHW0100

[Click to specifications](#)

The product made of Stainless Steel (Esp. 304)

Water inlet 1.5 inch or inch for all sizes

Rear Inlet Code	Length (CM)	Width (CM)	Hight (CM)	StainlessSteel (TYPE)	StainlessSteel (Thickness [MM])	Wood			
						Length (CM)	Width (CM)	Thickness (CM)	(TYPE)
SHW0100	100	80	240	304	2				
Mechanism			Filter						
Inside valve			No Filter			-	5	2.00	Tek Wood OR Beech Wood



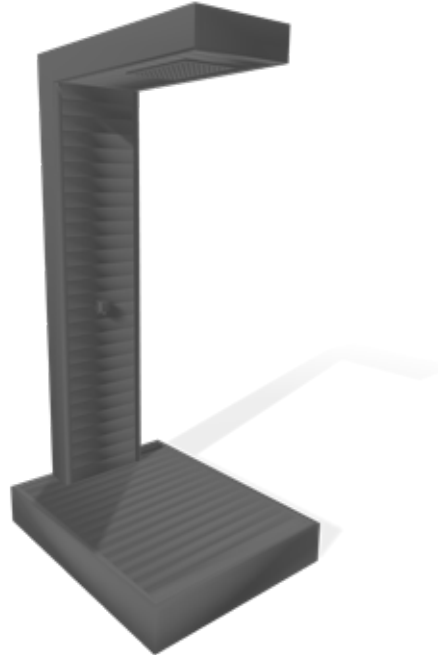


Code : SHW0200
[Click to specifications](#)

The product made of Stainless Steel (Esp. 304)
Water inlet 1.5 inch or inch for all sizes

Rear Inlet Code	Length (CM)	Width (CM)	Hight (CM)	StainlessSteel (TYPE)	StainlessSteel (Thickness [MM])	Wood			
						Length (CM)	Width (CM)	Thickness (CM)	(TYPE)
SHW0200	200	80	240	304	2				
Mechanism			Filter						
Inside Electric Valve			No Filter			-	5	2.00	Tek Wood OR Beech Wood





Code : SHW0300
[Click to specifications](#)

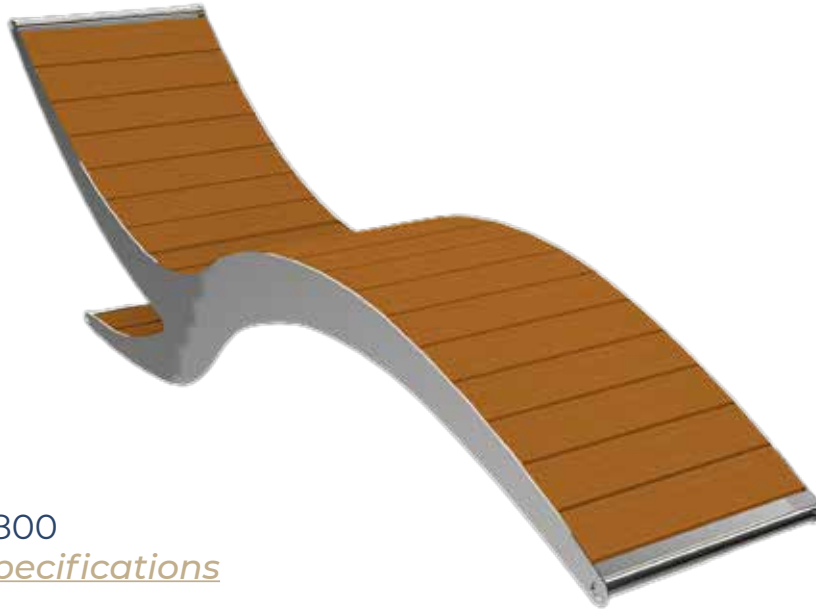
The product made of Stainless Steel (Esp. 304)
Water inlet 1.5 inch or inch for all sizes

Rear Inlet Code	Length (CM)	Width (CM)	Hight (CM)	StainlessSteel (TYPE)	StainlessSteel (Thickness [MM])	Wood			
						Length (CM)	Width (CM)	Thickness (CM)	(TYPE)
SHW0300	100	80	240	304	2				
Mechanism			Filter						
Inside Electric Valve			No Filter			-	5	2.00	Tek Wood OR Beech Wood

WATERFALLS CURTAINS

الشازلونج





Code : SS 800

[Click to specifications](#)

MODEL NO.	Length (CM)	Width (CM)	Hight (CM)	Thickness Side (MM)	Wood Length (CM)	Wood Width (CM)	Wood thickness (CM)	Wood Type
SS 800	269	60	92	3	60.0	5	2.00	Tek Wood OR Beech Wood



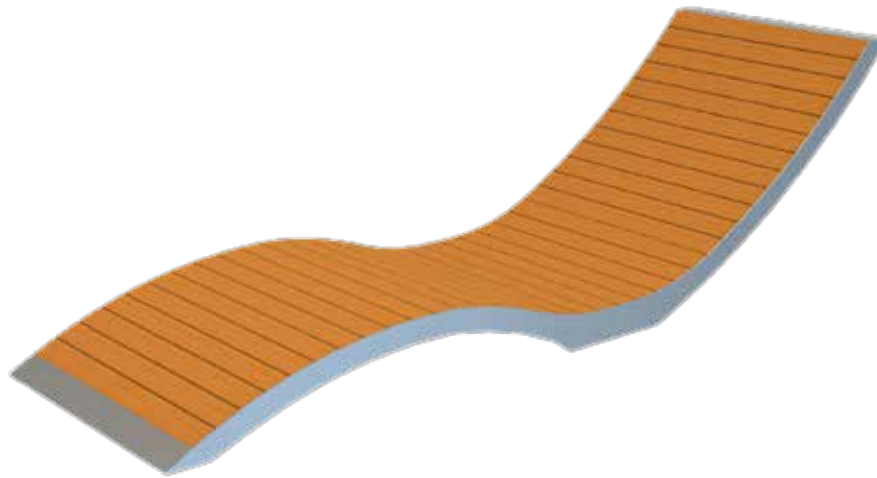


Code : SS 900

[Click to specifications](#)

MODEL NO.	Length (CM)	Width (CM)	Hight (CM)	Thickness Side (MM)	Wood Length (CM)	Wood Width (CM)	Wood thickness (CM)	Wood Type
SS 900	197	60	127	3	60.0	5	2.00	Tek Wood OR Beech Wood



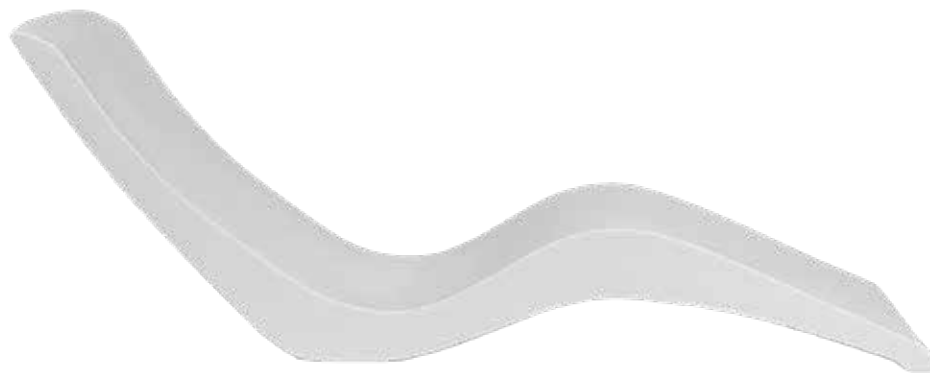


Code : SS 1000

[Click to specifications](#)

MODEL NO.	Length (CM)	Width (CM)	Hight (CM)	Thickness Side (MM)	Wood Length (CM)	Wood Width (CM)	Wood thickness (CM)	Wood Type
SS 1000	192	60	52	3	60.0	5	2.00	Tek Wood OR Beech Wood





Code : SS-F01

[Click to specifications](#)

MODEL NO.	Length (CM)	Width (CM)	Hight (CM)	Material (Type)
SS-F01	170	53	45	fiberglass







Code : SS-F02

[Click to specifications](#)

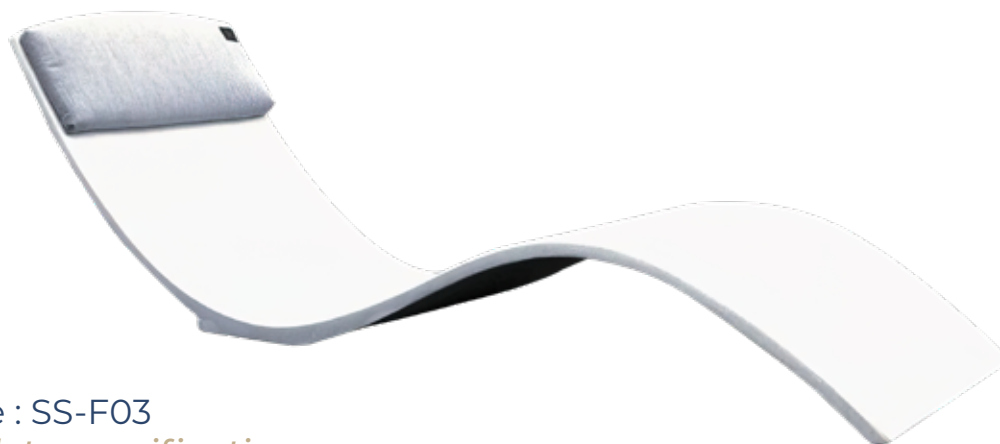
MODEL NO.	Length (CM)	Width (CM)	Hight (CM)	Material (Type)
SS-F02	110	50	75	fiberglass





AMON DECOR

المجموعة الهندسية أمون



Code : SS-F03

[Click to specifications](#)

MODEL NO.	Length (CM)	Width (CM)	Hight (CM)	Material (Type)
SS-F03	180	50	50	fiberglass

WATERFALLS CURTAINS

ستارت بلوک





Code : ST200

[Click to specifications](#)

Code	Length (CM)	Width (CM)	Jump Board	Jump Board Roof	System Jump Stand	Base
ST200	180	88	«Acrylic Reinforced Fiberglass + Beech Wood «	rubber	«Stainless Steel Tubing «	Stainless Steel



Code : ST160

[Click to specifications](#)

Code	Length (CM)	Width (CM)	Hight (CM)	Thickness Side (MM)	Thickness Roof (MM)	Thickness Base (MM)	Thickness Cover (MM)
ST160	50	40	70	2	1.5	3	6 Acrylic



Code : ST170

[Click to specifications](#)

Code	DI (CM)	Hight (CM)	Thickness Side (MM)	Thickness Roof (MM)	Thickness Base (MM)	Thickness Cover (MM)
ST170	40	55	2	1.5	3	6 Acrylic



Code : ST180

[Click to specifications](#)

Code	Length (CM)	Width (CM)	Hight (CM)	Thickness Side (MM)	Thickness Roof (MM)	Thickness Base (MM)	Thickness Cover (MM)
ST180	75	40	50	2	1.5	3	6 Acrylic



GAME

الألعاب



Code : GAME 09

[Click to specifications](#)

Code	Length (CM)	Width (CM)	Height (CM)	Stainless Steel tubes		Board	
				Type	Thickness (MM)	Type	Thickness (MM)
GAME 09	as orderd	10	120	304(8*8CM)	2	Acrylic Panel	10



Code : GAME 08

[Click to specifications](#)

Code	Length (CM)	Width (CM)	Height (CM)	Stainless Steel tubes		Board	
				Type	Thickness (MM)	Type	Thickness (MM)
GAME 08	120	50	160	304(6.4CM)	2	Acrylic Panel	10



Code : GAME 081
[Click to specifications](#)

Code	Length (CM)	Width (CM)	Height (CM)	Stainless Steel tubes		Board	
				Type	Thickness (MM)	Type	Thickness (MM)
GAME 081	120	50	160	304(8*8CM)	2	Acrylic Panel	10

THE HANDRAIL

الماندريل



Code : HAN011

[Click to specifications](#)

Code	Length (CM)	Width (CM)	Height (CM)	Stainless Steel tubes		Diameter (cm)
				Type	Thickness (MM)	
HAN011	150	80	90	304	1.5	3.5



Code : HAN012

[Click to specifications](#)

Code	Length (CM)	Width (CM)	Height (CM)	Stainless Steel tubes		Diameter (cm)
				Type	Thickness (MM)	
HAN012	80	70	90	304	1.5	3.5



Code : HAN013

[Click to specifications](#)

Code	Length (CM)	Width (CM)	Height (CM)	Stainless Steel tubes		Diameter (cm)
				Type	Thickness (MM)	
HAN013	60	70	110	304	1.5	3.5



AMON DECOR

المجموعة الهندسية أمون